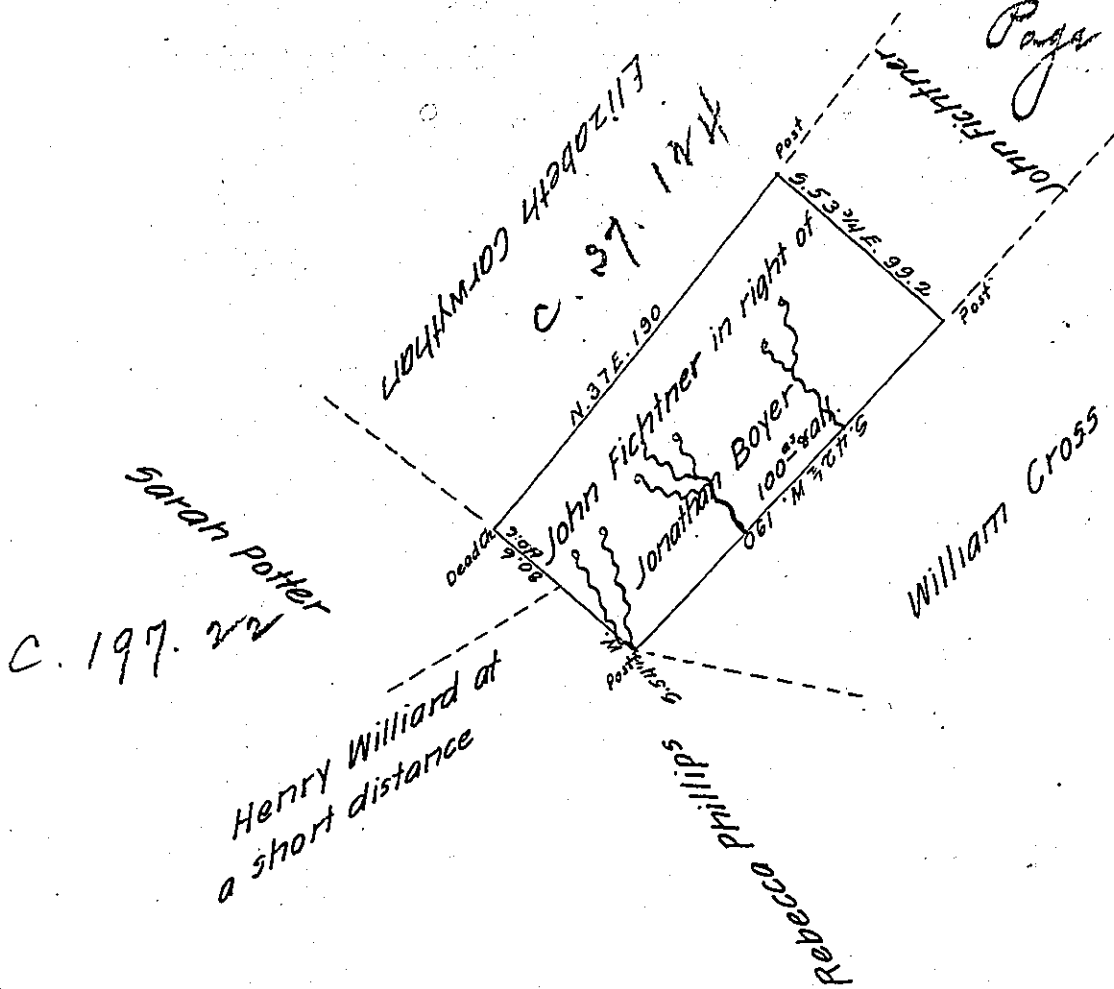


Page 154



Situate on the head Waters of Brush Creek Allegheny Township
 Somerset County (formerly Londondry Township Bedford County) contain-
 ing one hundred acres and allowance and surveyed by H. L. Holbrook
 on the 30th day of September 1847 in pursuance of a Warrant granted
 in the name of Jonathan Boyer bearing date the 5th day of February
 1793.

Certified 1st January 1848.

pc. Ross Forward D.S.

To John Laporte Esq
 Sur Gen }

IN TESTIMONY that the above is a copy of the original remaining on file in
 the Department of Internal Affairs of Pennsylvania, made
 conformably to an Act of Assembly approved the 16th day of
 February, 1833, I have hereunto set my Hand and caused
 the Seal of said Department to be affixed at Harrisburg,
 this first day of November 1904

Loac R. Brown
 Secretary of Internal Affairs.